

# The Plough

Averham, Kelham and Staythorpe  
Community and Parish Magazine

December 2021



*Wishing everyone in  
Averham, Kelham and Staythorpe  
A Very Happy Christmas  
and a Peaceful New Year*



---

Editor: Judith Mills. [Editor.plough@hotmail.com](mailto:Editor.plough@hotmail.com) ; 07775781591

Plough Website: <https://www.aksplough.co.uk>

# CONTENTS

## THE COMMUNITY MAGAZINE

What's on—quick look up	3
Christmas Eve Carols at Averham	4
Foodbank Collections	
New Year's Eve Party	5
Newark Book Festival	
Soft Plastic Collection and recycling	6
WI Report and events	7
Letter to the Editor	8
Gardening and Social Club report and events	9
Parish Council report	11
Christmas Decorations, Mistletoe and Stockings	12
Mary Siebel Trust Grants	14

## THE PARISH MAGAZINE

Services for Christmas and Sundays	16
A Message from Rev'd Georgie	17
More Carol services and January Sunday Services	18
Pumpkins at Kelham	19
Averham Church News	20
Poems for Christmas	22

## OTHER

The Adverts	23
Useful Contacts	28

**DEADLINE FOR ARTICLES ETC. FOR FEBRUARY 2022 EDITION IS  
20 January 2022 (no Plough in January)**

## What's on in December 2021 and January 2021 quick look-up

### 2021

- 1st-20th December FOOD BANK COLLECTIONS for Newark Women's Refuge
- 4th December Averham Church Christmas Decorating Party (p.20)
- 7-11th December The Vicar of Dibley at the Robin Hood Theatre (see Ads)
- 10-12th December SOFT PLASTIC WASTE COLLECTION (Kelham only) (p.6)
- 11-12th December Newark Book Festival (p.5)
- 13th December WI Christmas Party (p.7)
- 14th December Gardening Club Christmas Social (p.10)
- 20th December Southwell Music Festival (p.21)
- 24th December Carols on Christmas Eve at Averham (p.4)
- 31st December New Year's Eve Party (p.5)

*See pages 16 & 18 for details of all Carol and Christmas Services*

*And back page of Colour Supplement*

### 2022

- 10th January First WI meeting of 2022—details to follow
- 12th January Afternoon Tea at Averham Church (pp.20-21)
- 20th January Gardening Club—Kickstarting the new season (p.10)
- 4th February WI Celebrates Burns Night (p.8)

## From the Editor

As well as the magazine this month, there's also a 'colour supplement' looking back over 2021 in picture—as a reminder of what we have done despite all the problems. Now, we're also looking forward to the New Year, there is a lot going on—as the list above shows. A lot of information is now being circulated by WhatsApp so if you'd like to join one of the village groups please contact:

- ◀ (Averham) Tracey Carlisle: 07970179755
- ◀ (Kelham) Janet Emeny : 07751 117820
- ◀ (Staythorpe) Debs Storey; 07974 957 684

## Have a very Happy Christmas

## Christmas Eve Carols in Averham



[This Photo](#) by Unknown Author is licensed under [CC BY](#)

Once again we shall be holding our open-air Christmas Carol Service at 5.30pm on Christmas Eve. This year it will be in Pinfold Lane, Averham, near where it was first held nearly twenty years ago. This was when some of our church families thought it would be a good idea to have something for everyone to enjoy, especially excited children waiting for Christmas morning. So it was decided that 5.30pm would be a good time.

And it was! Numbers have increased year by year.

We shall be having Carols and listening to readings of the Christmas story, and receive a Christmas blessing. ASKABOUT will be joining in again with mince pies and mulled wine kindly provided by Tesco.

*PLEASE bring your own mug or plastic beaker—no glass please.*

Steve Emeny will be manning the sound equipment. A collection will be taken for the Reach Learning Disability Charity, which is based at Southwell

<https://reachuk.org/> and Beaumont House, Newark

<https://www.beaumonthouse.co.uk/>



Bring your friends and families to join us with your voices and lanterns, and a Santa hat. If anyone plays an instrument, we will be pleased to hear from them.

Muriel and David Keene, [keene.averham@gmail.com](mailto:keene.averham@gmail.com)

## Christmas Food Bank Collections

**1st—20th December**

**In support of Newark Women's Refuge**

**Please donate 'seasonal' goodies as well as staples—but nothing perishable, please.**

Collection Points as before

- Staythorpe: Front of Staythorpe Cottage (top right hand side of Pingley Lane)
- Averham: 5 Ayrshire Way
- Kelham: 12 Home Farm Close

## Averham Staythorpe and Kelham New Year's Eve Celebration

in association with the ASK Parish Council



**Back by popular demand the New Years Eve party is back**

The New Year's Eve celebration will be held at the Robin Hood Theatre from 20.00 until midnight.

Tickets are free of charge to village residents (any non-residents attending will be charged £5.00 which will be donated to Beaumont House.)



Tickets will be limited and will be allocated on a first come first served basis.

Food will be provided

All party goers need to do is dress up, come for fun and bring what ever drink and nibbles takes your fancy for the night as it's a BYO event.



Tickets available from Tracy @ 5 Ayershire Way, Averham (07970 179755)  
or Keith @ Croylands Church Lane, Averham (07407 790434)

### **New Year's Eve Party—some extra information**

- The Party is free to all AK&S villagers as there are residual funds from previous NYE parties. And there have also been village donations from the Parish Council and other sources.
- However, as we are still in Covid affected times, running it this way means it can be cancelled at very short notice without any cost to the organisers. This is also why it is being run as a BYO drink event.
- The organisers need your commitment by you booking tickets so they can successfully cater for you all.

## **Newark Book Festival presents Winter Wonderland**

*Saturday 11 and Sunday 12 December.*

Among the many activities, there is a family event with illustrator Chris Mould, street theatre with Rudolph and Franky; interviews with authors and an Evening Christmas Market. Tickets are needed for some events.

For more information and to book tickets, go to the Festival website

<https://www.newarkbookfestival.org.uk/winter-wonderland/>

## Soft plastic update and what should I put in my recycling bin?

To start, I would like to say a massive thank you to everyone who left soft plastic for me to collect on the weekend of the 13<sup>th</sup> November, it has already been taken to a supermarket to be recycled into new packaging. I will be doing the same again for Kelham on the weekend of the **10<sup>th</sup> December** for all your soft plastics that you are not able to take to the supermarkets that are currently recycling them: Co-op, Sainsbury's and Tesco. If you need a reminder of what counts as soft plastic visit this website <https://greatyeldhampc.co.uk/soft-plastics-can-now-be-recycled-at-supermarket-collection-points/> or consult the last issue of the Plough on its website.

However, today I would like to discuss something that is often the cause of family disputes, at least in our household: what is acceptable in our recycling bins? Many of us think we may have an idea what should be being recycled, but if we want our recycling systems to be effective we need to ensure we are using them correctly. I have compiled a list of what we should and shouldn't be recycling:

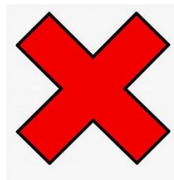


plastic bottles (without the lids)

yoghurt pots and margarine tubs

paper and cardboard

metal cans, aerosols and tins



plastic food containers, punnets,  
trays

shredded paper

cling film or foil

recyclable material with food waste

See the recycling website for full information: <https://www.newark-sherwooddc.gov.uk/silverbin/>

It is vital that we all work together to make the most of recycling our waste so that we don't allow materials that could have been recycled to be contaminated with substances that are not accepted. I hope that this will help to provide some clarity going forwards.

***Ava Morrell***

## AKS WI News for November 2021.

It was a really busy and fun get together in November when our very talented member Janet Emeny showed us how to make a Christmas Tree Decoration using mosaics. It was fascinating to see so many different styles using the same materials. No two were alike, but then that is what makes us all so special!! The plan is for members to bring their finished articles along to the Christmas Party on December 13th when we will be back on home ground again at the Robin Hood Theatre. The doors will be open from 6.30pm in order to set up the party food and stuff. Hopefully we will be able to welcome our new cohort of guests to this get-together. If any one would like to come along to test the WI waters so to speak you will be made most welcome. The collection for the Women's Refuge will close after this meeting so feel free to bring any donations of toiletries along. We are also wrapping a Secret Santa present for the ladies at the refuge just so they don't feel too left out.

In support of the international campaign to stop violence against women four of our members took part in the evening walk and vigil in the Market Place, Newark on November 25th. We were met by the Mayor at the WI County House and refreshments followed.



Two of our members have produced 37 orange poppies as part of this campaign which were distributed in Market Square, Nottingham on November 25th when a special vigil was held. Very busy time all round really but a very worthy cause.

Daring to look forward to the New Year with COVID confidence, we are planning on setting a formal programme for the monthly meeting and

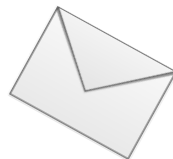
reintroducing the monthly competition as pre-Covid normal. The meeting for January has not been settled yet but make a note on your new calendar for 10th, 7pm at the Robin Hood theatre for our first meeting in 2022. More details will be posted on WhatsApp nearer the date.

Just a reminder about the Burn's Supper Night on February 4th again at the RHT. If you would like tickets please contact Jenny Cawkwell on 07563639379. (£10 for members £15 non-members)

In the meantime keep well and have a wonderful Christmas and see you in the New Year.

**Jenny Quickmire** Meeting Sec.  
[headbearsenior@gmail.com](mailto:headbearsenior@gmail.com) or 07890641102.

## A Letter to the Editor



Dear Editor,

I really would like to write a recommendation for the excellent service I've received from our local professional vehicle mechanic, Paul Cassidy. His business is named 'We Care Auto Repair'.

A year or so ago I was having brake problems with my car. Due to the pandemic I really didn't want to go to my usual garage in town. I'd seen Paul's advert in 'The Plough' with the tag line 'the garage that comes to you' so thought I would give him a try. I'm so glad I did. Not only did he fit new brake pads he cleaned up the front ones rather than replace them and even checked my tyre pressure when he noticed one was slightly soft.

Since then he's renewed the exhaust - again by first checking to see if he could save me the cost of a whole exhaust system. He carried out the work quickly, quietly and cleanly without any fuss and all on my driveway and at a fraction of the price I would have paid in town.

Today Paul has been to service my car and take it for MOT. He text me yesterday to confirm the booking and was here exactly on time this morning. Again he was efficient, enthusiastic and professional. He even cleaned the inside of my windscreen with glass spray because he'd noticed it was all smeared.

So, no driving into town. No hanging around for hours waiting for a call from the garage when the work was completed. No getting stuck in traffic on the way home. All I had to do was open my gate and make Paul a cuppa!

There's no going back for me now. Give him a try too. You won't be disappointed.

**Kate Kilby, Kelham**





## Gardening and Social Club News

Making a Christmas Wreath—a demonstration by  
Jo Ferguson

Tuesday 16 November

Many villagers will have seen the splendid arrangements Jo Ferguson, an Averham resident, has made for Averham Church. Jo began her demonstration by explaining that ‘during the day’ she is an HR manager and trainer, but in her spare time an avid ‘crafter’. Having joined a Facebook Crafters’ Group in 2019, she had tried many things and developed a range of skills, including wreath making.

Jo makes many types of wreath such as the one pictured here, made for Remembrance Day.

She began her demonstration by covering a wire ring, bought locally from e.g. Boyes or Yorkshire Trading (which she thought were cheaper than Amazon), with artificial ‘sisal moss’ from B&Q, secured by florist’s wire. This is then covered with greenery, e.g. from conifers, which is tucked into the sisal and secured by wires. The final piece of greenery has to be tucked underneath the first piece to form a complete circle.



This green base is then decorated with whatever the maker likes. Many of the materials Jo used, such as pine cones, teasel seed heads and holly leaves, are ‘foraged’ from around the village, though some, such as large cinnamon sticks are bought. To ensure there were splashes of colour, Jo also used artificial holly berries and of course some very sparkly ribbon which is reinforced with wire so that it keeps its shape.

As each of the decorations were wired in, Jo used these to tie in some of the longer greenery fronds to make a neat circle. Finally,



*Some she'd made earlier*

In addition to the wreath made during the evening, Jo had brought with her some decorations she had made earlier —as the saying goes.

Janet Emeny thanked Jo for an interesting demonstration.

Janet then announced that the next Garden Club meeting will be on 14th December at the Robin Hood Theatre. It will not, however, be a 'Fuddle' as originally planned but a social event with drinks and nibbles provided by the Club Committee.

she tightened up all the wires at the back and added some battery powered LED lights for that extra glow. Jo kindly donated the finished wreath, together with a gold-wrapped 'candy cane' decoration to the raffle, and there was also a pot of hyacinths, donated by Nigel Britton.



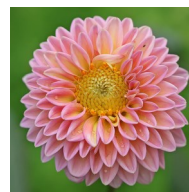
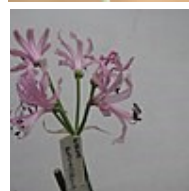
## **ASK Garden Club 2022**

### **Kick Start the New Season**

Nigel will be giving us a presentation on planning and preparing for the new growing season. He will bring along a selection of summer flowering bulbs such as Dahlias, Nerines, Alliums and Gladioli.

Available from January will be a range of first and second early seed potatoes ... which varieties produce a good yield and grow best in our soil type? There will also be a selection of early flowering perennials to look at and talk about too.

Not a member? Guests are welcome to any of our meetings for a small contribution or just £10 for membership.



## Report of the AKS Parish Council Meeting held on 26th October 2021

At the meeting held on 26<sup>th</sup> October 2021, Kelham Hall was discussed. Many local residents are not happy that The Lodge entrance is no longer available to use to enter the grounds and the Parish Clerk was tasked with asking them if this could be unlocked for residents to use. The Clerk was told unequivocally that that would not be possible.

A revised licensing application was also received and discussed by the members and it was felt that the Parish Council could not approve any amendments to the license hours until it is demonstrated that noise and anti-social behaviour can be controlled properly.

A new Community Wheelie Bin has been delivered to Kelham village and is located at Corner Farm thanks to Lorraine Bailey. It is labelled so should be easy to spot. Any litter collected by community litter pickers can be deposited in this bin but it **MUST** be bagged so it can be collected by the Street Scene Team who lift the bags out by hand.

**Meeting Dates** – The meeting scheduled for January 4<sup>th</sup> 2022 will probably **NOT** go ahead; this will be decided at the November Parish Council meeting.

The meeting scheduled for February 15<sup>th</sup> 2022 will probably be held at Staythorpe Power Station because the Robin Hood Theatre is not available. *If you wish to attend this meeting* you will need to let the Parish Clerk know beforehand so that a list of names can be given to the team at the Power Station. This will be reiterated on the published agenda nearer the time.

If you have any questions, please email the Parish Clerk.

Sue Jackson, Parish Clerk, [aksparishclerk@outlook.com](mailto:aksparishclerk@outlook.com)

Website: [akspc.org.uk](http://akspc.org.uk)



## Christmas Decorations, Mistletoe and Christmas Stockings

Like many of our traditional customs, Christmas decorations have been around for a very long time. When the hours of daylight are fewest and the sun weakest, our pre-Christian ancestors held a Midwinter festival when they lit bonfires and decorated their buildings with evergreens, probably because they believed that the dying sun was revived by fire and the dormant seed rejuvenated by the evergreen branches. And, of course, soon after the days started to lengthen and, eventually the sun was warmer and brighter as Spring approached.

With the advent of Christianity, the Spring gods became identified with Christ and the re-birth of the sun with the birthday of Jesus—that is Christmas time. Even so, some early church fathers such as Tertullian did not approve of Christmas decorations seeing them as pagan superstition. Others, like Pope Gregory the Great, however advocated reinventing the tradition and refocusing it to Christmas celebrations.

By 1598, John Stow of London wrote how:

Against the feast of Christmas, every man's house, as also their parish churches, were decked with holme, ivie, bayes, and whatsoever the season of the yeare afforded to be greene.

Greenery was, of course, cheap and used by 'ordinary' people to decorate their homes, while better off families displayed their wealth through tapestries, jewels and wax candles—beeswax being an expensive luxury when most people had to make do with tallow. Our baubles, Christmas Lights and electric candles are probably just a modern variation of such conspicuous displays.



Simply decorating your house with green branches has been replaced to a great extent by having whole trees in our houses. It's often said that this German custom was introduced to this country by Prince Albert after he married Queen Victoria and quickly adopted across the country. One explanation for their popularity of fir trees in Germany dates to the 8th century when St Boniface saw a group of people sacrificing a child under an oak tree—oaks were sacred to Druids, Celts and Romans. Boniface rescued the child, cut down the oak and found a fir sapling

growing beneath which he declared was a symbol of life. A second explanation is that Martin Luther, the 16th-century Protestant Reformer, used a fir tree decorated with candles as a teaching aid. Many of us now have artificial Christmas trees but even these aren't new. The Parker family from Wiltshire claim to have the world's oldest artificial tree. It was bought in 1886 and is still used every year.

A popular decoration—if you can get it—is mistletoe. As it blooms in the middle of winter, when very little else is about, it was sacred to Druids; what's more it often grows on oak trees, which were also sacred. Kissing under mistletoe is a Norse tradition—the god Baldur was killed by an arrow made of mistletoe and his goddess mother vowed that mistletoe would kiss anyone passing underneath, as long as it was never again used as a weapon. The word mistletoe, however, is Anglo-Saxon and means 'dung-on-tree', as it was believed that it grew from bird droppings.



Another essential of Christmas decorations is the Christmas stocking, which again has ancient origins. St Nicholas, who we often now call Santa Claus, was born in Greece in the third century and came from a wealthy family. He wanted to help a poor family without them knowing it, so dropped coins down their chimney which fell into stockings that had been left to dry overnight.

A variation on this story is that Nicholas tossed three bags of gold through the window, thus providing dowries for three girls. The bags are sometimes represented as oranges or as the three balls hanging from a pawnshop.

So, when you're hanging up your paper chains and putting baubles on your tree, remember that you're following traditions that go back hundreds, and in some cases, thousands of years.

Have a very Happy Christmas



Merry Christmas!  
Isn't it fun  
To say "Merry Christmas"  
To everyone?

Time for a party  
And presents and things  
That make children happy  
And give their hearts wings!

**Would you, or someone you know benefit from a grant from the MES Trust?**

# Calling for grant applications

We are calling for grant application from anyone  
Who meets our application criteria

- Is over 60 years of age with disability issues or mobility issues
- lives within a 12 mile radius of Newark Town Hall
- be in in need of assistance to remain in your own home

The Trustees will be meeting soon to consider  
grant requests for funding and support



MARY ELIZABETH SIEBEL  
TRUST

**Helping the Newark elderly stay independent in their homes since 1990**

“

*I feel I would like to thank the charity for the financial help I have so kindly been given. The walk in shower will be a great help to my old legs and I do sincerely thank you all at the charity.*

H Bottom, October 2021

”

For a grant application form, contact Tallents Solicitors on 01636 671881

Find us on Facebook: [facebook.com/MaryElizabethSiebelTrust](https://facebook.com/MaryElizabethSiebelTrust)





**News from St Michael and All Angels, Averham**  
**And**  
**St Wilfrid's Church, Kelham**



Kelham



Averham



Kelham, Averham and Staythorpe are part of the Riverside Benefice which also includes North and South Muskham.

Although all the churches are open for services, for the foreseeable future, these will also be 'live-Zoomed'.

If you'd like to join by Zoom, please contact  
Rev'd Georgie on

[georgie.hadley@yahoo.co.uk](mailto:georgie.hadley@yahoo.co.uk); **07811 393 920**

Averham Church is open on Tuesdays, Thursdays and  
Saturdays: 10am—4pm

## Sunday Services in December

**SUNDAY SERVICES**—all services will be in Church and linked through Zoom

5 December 9.30am Morning Prayer at North Muskhams

12 December 9.30am Holy Communion at South Muskhams

19 December 9.30am Morning Prayer at Kelham

*See below for Christmas Services*

*January Services, and other Carol Services on page*

### MIDWEEK SERVICES

Every Thursday Evening Prayer 6pm By ZOOM

If you'd like to join in any of the Zoomed services, please contact Rev'd Georgie

on [georgie.hadley@yahoo.co.uk](mailto:georgie.hadley@yahoo.co.uk); 07811 393 920



### Kickstart Start Christmas

at

St Wilfrid's Church, Kelham

12 December at 3pm

Let's get Christmas off to a Good Start



### Christmas Family Service

St Michael and All Angels Church, Averham

Sunday 19 December at 4pm

Come and hear the Christmas story

Make a Christmas decoration

Enjoy Refreshments



### Christmas Eve and Christmas Day Services

Christmas Eve: 11.30pm Midnight Mass at North Muskhams

Christmas Day : 10am at St Michael and All Angels, Averham





***Rev'd Georgie's Message  
to all in  
Averham, Kelham and Staythorpe  
Kicking Leaves and Walking with God***

Here we are at the end of the calendar year. Where has the last year gone? It's been yet another strange year. Some things are back to normal, yet not quite. Covid is still with us. Yet I think we are more hopeful this year of meeting with family and friends over Christmas and New Year.

As there is no magazine in January it's a time to wish you Happy New Year twice. The start of the Christian new year at the beginning of December and new year in January.

The days are getting shorter and the nights have drawn in, but when I open my curtains in the morning I marvel at the autumn colours with the yellows, browns, oranges and reds; a beautiful brightness to cheer up a dull day. However, the wind has done its best to tear them from the trees and eventually they will return to the earth, break down and nourish the soil.

I have a lovely picture of my granddaughter kicking leaves. I am reminded of that childish pleasure of kicking the dry leaves. Many years ago I was reading about time and stress and Rob Parsons, the author of the book, spoke about taking time out to just kick leaves. I think that can perhaps be extended to taking time out just to enjoy God's creation.

December and January are two months that have a different feel. The excitement, yet dread for some for Christmas, and the anticlimax of January. For many a lonely time.

Many of us have the daily ritual of walking our dogs. I read recently of a new thing. People feeling lonely as they walk their dogs are paying people to walk with them—people walkers! It is sad that someone would pay another person to walk with them because they are lonely.

In these dark months we need someone to talk to and walk with us. A reminder to think about our neighbours. We do have someone to walk with us. God is there by our side, if we but take time to recognise it. We may perhaps need to make the first move.

God wants to be the Divine People Walker. To be with us in the excitement of Christmas and the dark days of January and beyond, yet he is often ignored or forgotten. God desires our daily company, and is delighted to offer us his.

Read how he walked with others in, Luke 24:13-29.

Rev.d Georgie Hadley

07811393920, 01636 821343, [georgie.hadley@yahoo.co.uk](mailto:georgie.hadley@yahoo.co.uk)

### From the Register

Marriage: Declan and Katie Walsh

Funerals: Beryl Bush, Sylvia Scholte and Joyce Talbot

## More Carol Services and Church Services for January

### Carol Services

19 December, 6pm      St Wilfrid's, South Muskham  
Church of the Holy Rood, Ossington

21 December, 7pm      St Wilfrid's, North Muskham

### Sunday Services in January 202



2 January	9.30am	Holy Communion at North Muskham
9 January	9.30am	Morning Prayer for Plough Sunday, South Muskham
16 January	9.30am	Holy Communion, Kelham
23 January	9.30am	Morning Prayer, Averham
30 January	9.30am	Benefice Service of Holy Communion, Averham

# RIVERSIDE PARISHES CHURCH COMPETITION

## PUMPKINS GALORE in KELHAM!

Scary but beautifully carved Pumpkins adorned many doorsteps around Kelham village. They were all so good it made it impossible to judge so it was decided that everyone was a winner and prizes were distributed to all who took part. However a special mention goes to Home Farm Close children for their multiple entries.

Well done to everyone in Kelham and also Averham. Thank you for joining in with the spirit of our Riverside Parish communities and the “spirit of Halloween”  
oooooooooooooooooH!



*Janet Emeny*



## Averham Church News

It was lovely to see the regulars again at the afternoon tea on November 10th. As it was the day before Remembrance Day, Rob Starr (organist), paid us a visit and played all the old favourite songs from both World Wars. Made quite an impact in full blow so to speak. Tracy had made sure the Remembrance poppies were on show in the porch which just gave that special touch to the event and we had the usual array of cakes with a suggestion of WW restrictions, apart from the amazing Chocolate Gateau donated by Jean Burbage. Thank you for really spoiling us Jean.



On a more sombre note, Remembrance Day was marked at Averham church with a special evening service led by Georgie, but our very own David preached on the sacrifices made by so many throughout both WWs and he made a special reference to the huge loss of life of women. It was a very moving service. A collection was made for the British Legion. **We will remember them.**

It was a marvellous experience for me personally just to walk up and down the wonderful church path with lights! A personal thank you to Hilary for the very worthwhile effort getting it done and

preventing me from breaking a leg!

Looking forward to December and January, just a few dates of interest. Come and join in the **Church Christmas Decorating Party** on December 4th at 2pm. There will be mince pies and goodies for the youngsters and perhaps a glass of sherry for the non-drivers which will be enjoyed after the tree and tinsel have been duly sorted. Really good this time as we have been treated to a new tree and bits, again thanks to Hilary.

**The Christmas Family Service** will be held on **December 19th 4pm** at Averham. (Note the date is 19th not 12th.) There will be refreshments and a Christmas Decoration workshop, so just a bit more than a service.

Looking forward to January 2022 **The Afternoon Tea** will be held on January

12th at 2pm, so it will be nice to catch up again and hear about your Christmas  
Just a note of thanks to everyone for their help and support with so many things going on in our church. A special thank you to our Cleaning Team who help out through the year with a special mention to Tracy Carlisle who makes sure the church carpet is always spotless. Much appreciated T.C .  
Wishing everyone a joyous and peaceful Christmas and New Year.

*Jenny Quickmire*

## Please support Kelham and Averham Churches

### Averham Church

[https://givealittle.co/  
campaigns/ab066f56-6393-  
4d59-8c9f-813bd2ad1557](https://givealittle.co/campaigns/ab066f56-6393-4d59-8c9f-813bd2ad1557)



### Kelham Church

[https://givealittle.co/  
campaigns/c418995a-257a-41b5-  
9d69-beb91cd43c9a](https://givealittle.co/campaigns/c418995a-257a-41b5-9d69-beb91cd43c9a)



## Southwell Music Festival

returns this December for a one-night only *Christmas Celebration* in the exquisite surroundings of Southwell Minster.

Gather with family and friends on **Monday 20 December** for an evening of seasonal words and choral music performed by Southwell Festival Voices, conducted by Artistic Director Marcus Farnsworth with readings from stage and screen actor Philip Franks.

Tickets are priced from £12 – book online at [southwellmusicfestival.com/onlinebooking](https://southwellmusicfestival.com/onlinebooking) or call the Box Office on 01636 330014.

## Poems for Christmas

### Christmas Rush *By Megan Carter*

That time again, my trolley's full  
Buying all the Christmas fare,  
A turkey crown, a rib of beef,  
Crisps and nibbles, lots to spare.  
  
Christmas crackers and serviettes,  
Paper for wrapping and cards to send,  
Nuts and oranges, figs and dates  
The list goes on, there seems no end.  
  
In all this rush it's good to pause  
And think about that special Day,  
When shepherds watched and angels sang  
As a Baby lay in a bed of hay.

### Your Gift of Life – at Christmas *By Sam Doubtfire*

Creaking on the staircase —  
Noise outside my door —  
A rustle in the chimney —  
It's 'Santa-time' once more.  
St Nicholas is on his way  
With all his Christ-life gifts  
To fire every child-light with  
The loving Christ-mass kiss.  
  
In some he'll place the gift of gold —  
In others frankincense —  
While others will be given myrrh —  
All signs of God's presence.  
  
For in each earthly crib or bed  
In squalor, comfort, splendour —  
The Christ child has been placed  
again

To call the world to wonder.  
So come you kings, come one, come  
all,  
Come shepherds to the cradle stall  
And hear the angels sing a-new  
The heavenly song they sing for you.

Your God is in your gift of life—  
The life He gives with love—  
So take the gift and use it,  
Use it wisely, don't abuse it,  
Let the Christ-life fire your spirit  
That God in you may LIVE.

A beautiful venue for your exclusive event,  
from small and intimate up to 120 guests.

**WEDDINGS  
CELEBRATIONS  
MEETINGS  
PRIVATE DINING  
MEMORIALS**

— AT KELHAM HOUSE —



**Kelham House**  
Country Manor

**kelhamhouse.co.uk • 01636 705266**

Kelham | Newark | Nottinghamshire | NG23 5QP



**Hensathome**



**Pet Services**  
[www.hens-at-home.co.uk](http://www.hens-at-home.co.uk)

**Call Debs:**

**07974 957684**

**debs@hens-at-home.co.uk**

## Your local petsitters

Overnight home boarding for dogs

Doggie daycare

Home visits for your fur, fin & feathered pets

Staythorpe, Newark, Nottinghamshire

JAN17



## Property Maintenance

### RPA Joinery and Building Maintenance

Complete Property Maintenance including:

Tiling, decorating, plumbing, gardening, plastering, fencing,  
roofing, brickwork, garden and patio hard landscaping, electrics,  
soffits and fascias

**Contact Rob: 07801 060589 / 01636 705668**

**Email: [roballen64@hotmail.com](mailto:roballen64@hotmail.com)**



### PLUMBING AND HEATING

Boiler replacement and heating system upgrades

Boiler service and repairs

Unvented and vented hot water installations and  
maintenance

Bathroom design and installation

All general plumbing and heating work provided

For a free quote, please get in contact with:

Ryan Burbidge  
07532 283484

Samuel Hedley  
07539 270467

[info@eliteheatltd.com](mailto:info@eliteheatltd.com)





**Highfields**  
Independent School & Day Nursery  
LONDON ROAD, NEWARK, NOTTS NG24 3AL

## NOW ENROLLING FOR ENTRY IN 2022

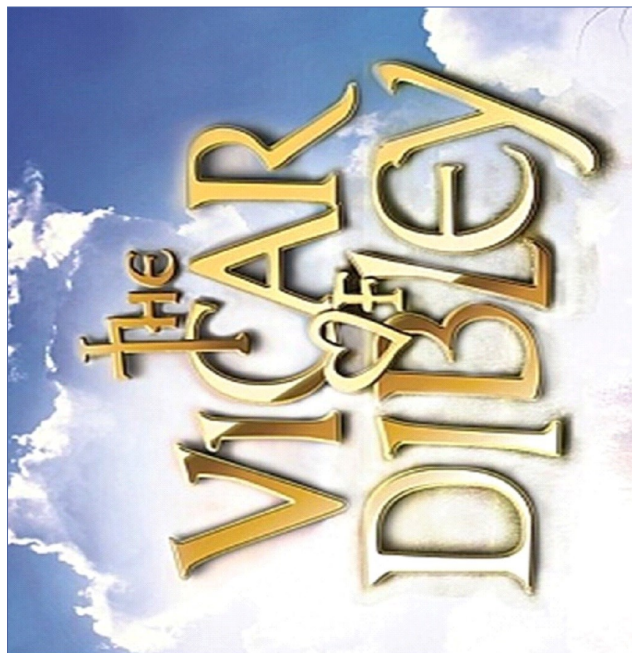
### in Reception and across school

- ◆ Strong academic record ◆ Enhanced curriculum
- ◆ Small friendly classes ◆ Excellent pastoral care
- ◆ 14 acres of beautiful parkland ◆ Before and After School care
- ◆ Outstanding senior school preparation



For further information please contact: Cleo Staniforth 01636 704103  
admissions@highfieldschool.co.uk

[www.highfieldschool.co.uk](http://www.highfieldschool.co.uk)



**7<sup>th</sup> to 11<sup>th</sup> December 2021 @ 7.30 pm**  
**plus a Saturday matinee @ 2.30 pm**

A stage play adapted from the original TV series  
by Richard Curtis and Paul Mayhew-Archer.  
With kind permission of Tiger Aspect Productions.

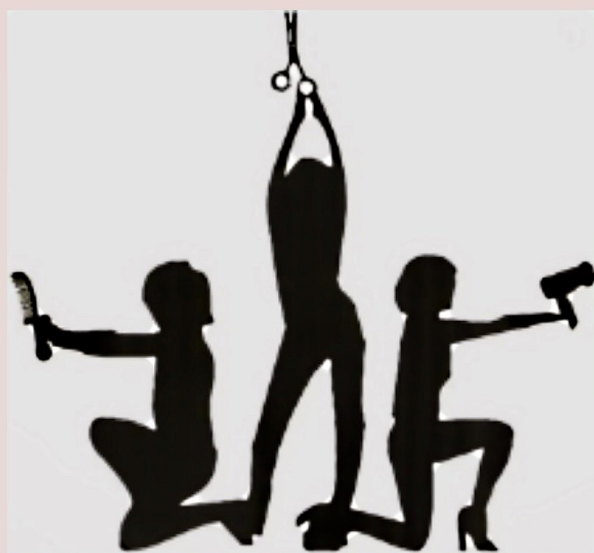
THE ROBIN HOOD  
THEATRE COMPANY  
RHC

**THE ROBIN HOOD THEATRE**  
TICKETS £12.00 MEMBERS £10.00  
CHURCH LANE AVERHAM NEWARK NG23 5RB  
BOX OFFICE : 07733 179986 BOOK ONLINE AT RHC.CO.UK



ROBIN HOOD THEATRE COMPANY LIMITED. REGISTERED IN ENGLAND. COMPANY NO. 0411454. REGISTERED OFFICE: 10, WINDMILL LANE, BUCKINGHAM, MK1 1JG. REGISTERED CHARTER 114540





Milkshake & Revlon professional accredited  
Salon

---

# Hair Design by Pina

## Love is in the hair

---

*Main Street  
North Muskham  
NG23 6ER*

**TELEPHONE**  
**01636 679800**

*hairdesignbypina.co.uk*

## *'Our family caring for your family'*

The Gill family are proud to have provided care and advice to families in the Newark and District Area for over 100 years

For those who wish to provide for their funeral expenses, we offer the  
E. Gill & Sons Funeral Pre-payment Plan

- A Local Funeral Plan
- A Local Price
- A Local Independent Funeral Director
- Funds held in a guaranteed whole of life insurance policy

55 Albert Street,  
Newark, NG24 4BQ  
Telephone: 01636 677461

# We Care Auto Repair

The garage that comes to you.

Fully qualified with 20 years' experience

Dealer trained



	Servicing		Brakes
	Clutches		Warning Light Diagnostics
	Suspension		Free Estimates
	Timing Belts		Fully Insured

Paul Cassidy 07926 250 269

[wecareautorepairs@outlook.com](mailto:wecareautorepairs@outlook.com)

## SARAH KINGSLEY

FOOT HEALTH PRACTITIONER

SAC DIP (FOOT HEALTH PRACTICE)  
RHFP NO. S280333

£20 PER TREATMENT SESSION

HOME VISITS FOR NAIL  
CUTTING, TREATMENT OF  
CORNS, CALLUS, THICKENED  
& FUNGAL NAILS, CRACKED  
HEELS & VERRUCAE

TEL : 07443454177

## The Plough Community Printing Service

*I am able to offer a printing/copying  
service to residents of*

*Averham, Kelham and Staythorpe*

*Or clubs/associations related to*

	Colour	B&W
A4 Single-sided	8p	5p
A4 double	15p	8p
A3 single-sided	15p	8p
A3 double	20p	12p

Email : [Editor.plough@hotmail.com](mailto:Editor.plough@hotmail.com)  
for more information

## USEFUL CONTACTS

**CORONAVIRUS UPDATES:** please see the District Council website:

<https://www.newark-sherwooddc.gov.uk/>

\* \* \* \* \*

### The Churches

Rev'd Georgie Hadley, [georgie.hadley@yahoo.co.uk](mailto:georgie.hadley@yahoo.co.uk); 07811 393 920

Kelham: Church Warden, 01636 703289 (Philip Staniforth)

Treasurer: 07889 486260 (Steve Emeny)

Averham: Church Warden, 01636 919146 (Shaun McLaughlin)

Treasurer: 01636 672640 (Hilary Snell)

Parochial Church Council Secretary: 01636 816343 (Carole Binks)

\* \* \* \* \*

**AKS Parish Council:** website <http://www.akspc.org.uk/community/averham-kelham-and-staythorpe-parish-council-15064/home/>

Chairman: Andy Fereday, 0775 2265081; [cllrfereday@gmail.com](mailto:cllrfereday@gmail.com)

Clerk: Sue Jackson; [aksparishclerk@outlook.com](mailto:aksparishclerk@outlook.com)

\* \* \* \* \*

**Gardening Club:** Nigel Britton; 01636 700023 or 01636 812886

**Walker's Group:** Debs and Carla; 07974 957 684 or [debs@hens-at-home.co.uk](mailto:debs@hens-at-home.co.uk)

**Bell Ringers:** Martin Cooper; 07810 658 627 or [mlcooper2@gmail.com](mailto:mlcooper2@gmail.com)

**Women's Institute:** Angela Moore (President) [angela@oranalysts.com](mailto:angela@oranalysts.com)

or Jenny Quickmire (Meetings Secretary) [headbearsenior@gmail.com](mailto:headbearsenior@gmail.com)

\* \* \* \* \*

**PCSO contact details:** Richard Dunn: 07595 074292

**Staythorpe Power Station:** [Staythorpe@rwe.com](mailto:Staythorpe@rwe.com); 01636 596900

**Latham's Farms:** Steven Gill 07966 382781; Stuart Perkins 07818 171689

**To report Potholes:** 0300 500 80 80 / [www.nottinghamshire.gov.uk/transport/roads/potholes/report-a-pothole](http://www.nottinghamshire.gov.uk/transport/roads/potholes/report-a-pothole)

**CODE FOR THE DEFIBRILLATOR BOXES: C0159X**

*If you think I've missed a useful contact, please get in touch:*

[editor.plough@hotmail.com](mailto:editor.plough@hotmail.com)