

# The Plough

Averham, Kelham and Staythorpe  
Community and Parish Magazine

February 2022



*The Plough needs a new Editor  
Could this be YOU?  
See p.3 for more*

---

Editor: Judith Mills. [Editor.plough@hotmail.com](mailto:Editor.plough@hotmail.com) ; 07775781591  
Plough Website: <https://www.aksplough.co.uk>

# CONTENTS

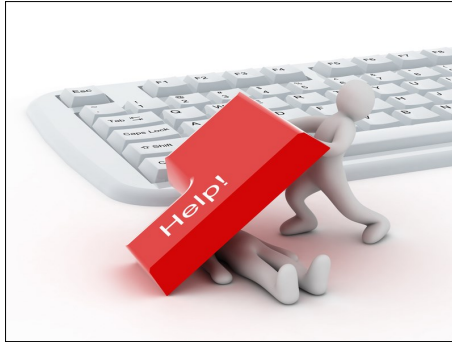
Could you be the next Editor?	3
Reading Circle book reviews	4
Soft Plastic Recycling in Kelham	5
December's Food Bank Collection—a thank you	6
Women's Institute Report	7
Garden and Social Club Report	8
Parish Council Report	9
Behay Gardens Sign	10
Keeping our Villages Safe	11
Services for February & Lent Course 2022	13
A Message from Rev'd Georgie	14
Messy Church	16
Averham Church News	17
Five Famous Quotes from Desmond Tutu	18
The Adverts	19
Useful Contacts	24

## What's On in February

11th Feb	Soft Plastic Collection (Kelham only)
14th Feb	7pm WI at the Robin Hood Theatre
15th Feb	7pm Garden Club Meeting at Southwell Garden Centre
	7pm Parish Council Meeting at Staythorpe Power Station
23 Feb	2pm Tea and cakes at Averham Church

**DEADLINE FOR ARTICLES ETC. FOR MARCH 2022 EDITION IS  
20 February 2022**

## Could you be the New Editor of The Plough?



I've decided that 2022 is going to be my last year as Editor of The Plough as I've been looking after the magazine since September 2016, initially with Athena Hodge as co-editor; we took over from Lee and Nigel who were a hard act to follow. It has been a thoroughly worthwhile and enjoyable job but the time has come for a change.

I would recommend taking on the Editorship to anyone who's interested in what's going on in our villages and would enjoy supporting our community efforts through The Plough.

I'd be delighted to talk through what's involved, just email or phone me—my contact details are: email: [Editor.plough@hotmail.com](mailto:Editor.plough@hotmail.com) ; mobile: 07775781591 (of course signal is variable, so you may have to leave a message and I'll get back to you.) To give you some idea of what's needed, you should

- Be confident using a computer, ideally able to lay out documents and pictures, but I can coach you through what's needed if you've not done it before.
- Have a few days a month free to collect together articles, do the lay out, proof/correct and print the magazine.
- Be prepared to write the odd item yourself, or use on-line sources to find entries.

The work could easily be shared between two people, if that works better for you. And I'll be happy to support the new Editor in whatever way that's needed for the first few months.

In the meantime—enjoy this issue

***Judith***



## THE PLOUGH READING CIRCLE

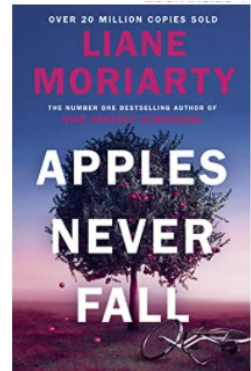
### Book Reviews for February

#### A Review by Catherine Wright: Liane Moriarty—*Apples Never Fall*

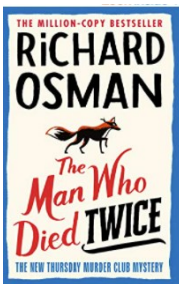
I enjoy Liane Moriarty's books; her plots are intertwined, and her writing style means her books are not difficult to read. Sometimes we all need a book that is a light read. I find her books are a holiday kind of book, a story you want to read on, but you are still happy to snooze mid-chapter.

Joy and Stan used to own a tennis academy and are now retired; they have four children with various personalities. You start to love all of them, but when Joy goes 'off grid', you start to doubt why Stan is being evasive and does not seem to worry about her ... Who is Savannah?

This is a story about family love and mistakes, about ageing together and understanding between couples and families and the bond we create as we grow up. We learn about different perspectives of a situation and communication. Enjoy the twists and turns as you read or listen to the book. If you listen to books like me, don't worry about it being set in Australia or the accent; you get used to it and it adds depth to the story.



#### Two Reviews by Jenny Quickmire:



The Christmas break gave me the opportunity to get some serious reading done. I really enjoyed Richard Osman's second light-hearted crime novel *The Man Who Died Twice* being the sequel to the *Thursday Murder Club*. For those not familiar with this book the stories are set in elderly sheltered accommodation flats and centre around four friends: Elizabeth (an ex-MI5 agent), Ron and Ibrahim the 2 gents who take care of Elizabeth, and Joyce. All sounds a bit twee

perhaps but don't let the background info put you off. This latest book I think is better than the first which won great acclaim last year anyway. It is a murder mystery story with lots of different threads which all weave magically together in the last chapter. Very cleverly done. I really could not put it down, which from me is high praise as I am normally just a couple of chapters before lights out!! Now looking forwards to his 3rd missive which is due for release in September.

Another little book, which I had as a Christmas present is a charming but thought provoking account of life in the 1960s in a small Irish town. Whilst it is fiction, it is based on events concerning the fate of unmarried mothers and the traumas endured by these unfortunate young women at the hands of the local convent establishment. The story tells of everyone turning a blind eye on the atrocities apart from one man, the local coal merchant. It also gives a lovely picture of life in rural Ireland in this period. The book is by Claire Keegan and titled 'Small Things Like These' Only 110 pages long but very powerful narrative. If anyone would like to try it please let me know but I would like it returned as it was a present.



Jenny Quickmire. 07890641102

---

## Huge thanks to those collecting soft plastics!

Over the past few months, I have been so pleased by how many villagers in Kelham have been engaging in saving their soft plastics for me to collect. If you want to start collecting in time for this month's round, the collection will be on Friday 11<sup>th</sup> February. We have been taking everything you give us to a supermarket to recycle and we are really helping to collectively make a difference. If you want to get involved but don't often visit a supermarket with soft plastic recycling facilities, I would be so glad to collect yours as well (for all Kelham villagers). I hope you all had a restful and happy Christmas and New Year!

**Ava Morrell**

*[Ava's plastic collection initiative was reported in The Bramley and the article was picked up by Lowdham where they hope to start a similar project. WELL DONE AVA. ]*

## December's Food Bank Collection

December's foodbank collection was donated to Newark Women's Aid, a charity our villages often support. In January, they wrote to thank everyone who took part. We should also thank Tracey for coordinating it all.



*Helping Women and Children Rebuild their Lives since 1975*

Would you please pass on our sincere thanks to all the members of the villages of Averham, Kelham and Staythorpe who donated to your food collection in support of our Charity this Christmas.

The collection we received was wonderful and these things really do make Christmas very special for our families. Your generosity and support is very much appreciated.

As you know, we aim to make Christmas special for the families in our Refuge, women and children who have been made homeless because of domestic violence and abuse, but we can't do it alone; it can only be achieved with support from our local community, so thank you all so very much.

Kindest regards,  
Marlene, Lisa, Lucy & Ellie.  
Newark Women's Aid



A small selection of what was donated





## AKS WI News for February 2022.

It certainly seemed like déjà vu in January as the planned meeting with Tim Barbary (self-defence expert) had to be cancelled. Tim was hoping to show us one or two moves in self-defence: however all is not lost as we are hoping we can go ahead with this at a later date. Tim very kindly put on his other expert hat for a zoom meeting about packaging and how misleading some of the information about packaging can be.

According to Tim plastic is not the pariah we are all led to believe. If it is used responsibly and if there was a national policy on structured recycling all plastic is reusable, but is dependent at the moment on where you live. He urged the members to take up the mantle of campaigning for the introduction of national policies. In the meantime consider the carbon footprint generated by packaging. Paper production leaves a very heavy carbon footprint if one considers the transportation of raw materials i.e. pine trees from Canada. There is a huge use of energy to produce paper and in the end paper packaging is not very durable compared to plastic. Even to recycle paper costs carbon so not as squeaky clean as we are led to believe!! He stated that plastic food packaging probably off set its carbon outlay by the amount of food it saves from being wasted. His ideal situation would be for a symbol being mandatory on all packaging declaring the carbon foot print. Hopefully this will be available in the near future. Tim's excellent talk and PowerPoint certainly gave us food for thought!! *[FROM THE EDITOR—you might like to read Ava Morrell's update on soft plastic collection in Kelham, see p.5]*

Hopefully the February meeting will be live on 14th February, at the RHT when we will be hearing about the local author and illustrator Kate Greenaway. Unfortunately the extra arrangements for the Burn's Night Supper and a visit to the theatre and a lunch were cancelled in view of the pandemic yet again. Hey Ho! At least we are working our way through the cold and dark of winter and should be able to get together again very soon. Any updates will be posted on WhatsApp so keep an eye on that.

**Jenny Quickmire** Meeting Secretary  
[headbearsenior@gmail.com](mailto:headbearsenior@gmail.com) or 07890641102.





but inevitably there were groans of, 'how are we supposed to know that' as well as 'that's an easy one'.

We thought against playing musical chairs as it would have been difficult to socially distance and perhaps be a little too boisterous, so instead we played pass the parcel. Several layers of paper were torn from the parcel as it was passed around the room and the music stopped. Just as an extra bonus, Janet Clifton had placed packets of seeds between the layers as additional treats when wrapping the parcel up so beautifully.

Our next meeting is on **Tuesday February 15<sup>th</sup> at Southwell Garden Centre.** "It's all about Spring" This will be under cover but in the open air so we may need to wrap up to keep warm. Guests are very welcome to all our meetings for a £3 admission fee.

*Nigel Britton*

## **Report of the AKS Parish Council**

There was no Parish Council meeting in December or January so not a lot of news for you but I would like to remind you that the February meeting is being held at **Staythorpe Power Station**. If you wish to attend you will need to give me your name before the day so I can pass it on to the gatehouse. Please email [aksparishclerk@outlook.com](mailto:aksparishclerk@outlook.com).

The meeting is on 15<sup>th</sup> February at 7:00pm.

The Parish Council have set up a Twitter account, if you want to follow us please go to Twitter and search for @aksparishclerk. If you have any local interest information you would like publicised on the Twitter feed just let me know. The feed can also be viewed on the Parish Council website's home page.

Beginning in June, Parish Council meetings will be the 3<sup>d</sup> Monday in the month with no meeting in December. Previously meetings had been every 6 weeks or so which may have made it difficult to keep track of when meetings were. Meeting dates are also published on the Parish Council Website.

Sue Jackson, Parish Clerk, [aksparishclerk@outlook.com](mailto:aksparishclerk@outlook.com)

Website: [akspc.org.uk](http://akspc.org.uk)

## Behay Gardens Sign

For several years Behay Gardens has had no nameplate. The original sign was damaged and removed after an attempted theft so a request was made via the Parish Council for the District Council to replace the sign. However as Behay Gardens doesn't have an adopted road, it's considered to be private and doesn't meet the criteria for funding from the District Council.

After further requests during the pandemic highlighting the importance for clear signage as we rely more now on home deliveries, we were told if we wanted a new sign it would have to be paid for by the residents of Behay Gardens or the developer.

In recent times street signage has been upgraded throughout the county and we also now have numerous decorative village nameplates. Regardless of where the money comes from for these, we assumed that essential signage would come from our council taxes.

The original developer of Behay Gardens was the British Electrical Authority (BEA)... hence Behay. The houses were built for the managers and chemists for the new Staythorpe Power Station in 1947. Incidentally the houses were designed by Thomas Cecil Howitt, who was the architect for many of the Nottingham estates and prominent buildings including the Council House.

<https://www.howittpartnership.com/thomas-cecil-howitt>



Nikki Marshall from RWE Staythorpe Power Station contacted me picking up on an email request for help and offered to order and pay for the new sign. This has now been installed by the District Council and names Behay Gardens once again.

We would like to say a big thank you to RWE for their support and intervention.

***Nigel Britton***

## Keeping our Villages Safe and Crime Free

The Plough has been contacted by a resident of Rolleston concerned about the recent incidents at Staythorpe which have caused great anxiety to some residents. And, of course, there are incidents of rural crime of all types recorded. On advice, I am not printing the letter as it concerns an on-going police matter. However, some important points for our communities were raised.

Whether you have always lived here or have chosen to live here because you believed you would have a better living environment here, I'm sure that you will agree that crime of any kind cannot be allowed to proliferate and we can all play our part. Here are a few ideas:

Nottinghamshire Police have a very informative—and extensive—website of advice and information. The Home page is

<https://www.nottinghamshire.police.uk/>

And there are Advice pages on a whole range of topics—here are a few:

- Drugs and drug-related activity: <https://www.nottinghamshire.police.uk/advice/drugs>
- Antisocial behaviour: <https://www.nottinghamshire.police.uk/site-page/antisocial-behaviour>
- Wildlife crime: <https://www.nottinghamshire.police.uk/advice/report-wildlife-crime>

You can also help the police by becoming a 'crime fighter' and again the Police website has a lot of information about this, including Neighbourhood Watch schemes and a place to sign-up to Nottinghamshire Alert updates

<https://www.nottinghamshire.police.uk/crimefighter>

Our local PCSO is Richard Dunn, 07595 074292 - his contact details are always on the back of The Plough.

If you want to report a crime anonymously, you can call Crime Stoppers on 0800 555 111.

The Neighbourhood Watch website is <https://www.ourwatch.org.uk/>

You can report anti-social behaviour to Newark and Sherwood District Council via its website <https://www.newark-sherwooddc.gov.uk/your-district/public-protection/>

*Judith Mills*

## News from St Michael and All Angels, Averham

And

## St Wilfrid's Church, Kelham



Kelham



Averham



Kelham, Averham and Staythorpe are part of the Riverside Benefice which also includes North and South Muskham.

Although all the churches are open for services, for the foreseeable future, these will also be 'live-Zoomed'.

If you'd like to join by Zoom, please contact  
Rev'd Georgie on

[georgie.hadley@yahoo.co.uk](mailto:georgie.hadley@yahoo.co.uk); **07811 393 920**

Averham Church is open on Tuesdays, Thursdays and  
Saturdays: 10am—4pm



## Church Services in February

**SUNDAY SERVICES**—all services start at 9.30am will be in Church and on-line through Zoom

- 6 February North Muskham: Morning Prayer  
13 February South Muskham: Holy Communion  
20 February Kelham: Morning Prayer  
27 February Averham: Holy Communion

### MIDWEEK SERVICES

Every Thursday Evening Prayer 6pm By ZOOM  
If you'd like to join in any of the Zoomed services, please contact Rev'd Georgie on [georgie.hadley@yahoo.co.uk](mailto:georgie.hadley@yahoo.co.uk); 07811 393 920

It is with great sadness we report, the sudden death, on Christmas Day, of Wilf Boddington. We want to pass on our sincere sympathy and condolences to Wilf's family and friends.

## Lent Course 2022

6 weeks starting Tuesday 2nd March 2022, 2.15 for 2.30 start

**LIVE LENT**  
**Embracing**  
**JUSTICE**

This Lent we are called to reflect on the injustices of the world and ask what God is calling us to do about them. Over forty days, we step into God's work in the here and now – and in doing so we move from brokenness towards wholeness.

See the Church of England website <https://www.churchofengland.org/resources/livent-2022-church-resources-embracing-justice> for further information.

More details in the next edition of the magazine



***Rev'd Georgie's Message  
to all in  
Averham, Kelham and Staythorpe***

**The Church to the Glory of God**

I have thought a lot about our church buildings, as there is a move to develop worshipping communities away from these traditional buildings. Some would say, and I have thought it too, that they are symbols and not always necessary. The church is the people and salvation is found in Jesus, and that is right.

However, travel around rural England and you will see a church in nearly every village. Many built hundreds of years ago. Think of how they were built, why they were built, and who built them. There were hundreds of builders with different talents and crafts involved in the building of churches. Many built by landowners, some from what was called the common purse, most built in the shape of a cross, high and lofty stretching up to heaven to the Glory of God.

A church building is noticeable; a beacon offering sanctuary and being a guide. In horse racing, one kind of race is a steeple chase, because they raced from steeple to steeple. Beacons showing the way, a sense of direction. A new pilgrim way has been developed in Derbyshire where you can walk from village church to village church, spending time in each building; recording and soaking up the presence of God in each church. Churches are open to offer a quiet place, a place of peace. Jesus Christ can be felt and found in these ancient buildings which have soaked up the prayers and the hymns of worshipping people over the centuries—the Holy Spirit of God is found in their DNA.

Even in those which have sadly closed, God resides. The church I went to as a child has been closed for many years, but going into it and sitting in the pews, God's Spirit still dwells there. The atmosphere created is still there.

People take time to visit churches from humble small village churches to the grand Cathedrals. Why? Because held within them is the knowledge and glory of God. They were built to his glory, his holiness.

The succeeding generations who have worshipped there have helped create that spirituality that can be discovered there. They have brought their acts of worship; they have discovered their faith there. People young and old are still drawn to them.

Personally, I have come to believe we write them off for our and future generations, to our detriment. Yes, we can discover and come to faith in all manner of places and meet God at every turn in our lives—in the countryside, in cow sheds, in piggeries, in friends' kitchens—but if you have the need for peace; a place of healing and restoration, sitting or kneeling in front of God's altar, a church where people have met with God through the sacrament of communion is a powerful place. A thin place where heaven and Jesus are easily accessible.

Can new communities of worshippers be built in such places? I whole heartedly think they can. There is no sense that God has abandoned them yet.

Go into a church building—yes it takes courage and the door is often tough to open, just like our hearts can be tough to open to Jesus. There to meet you is Jesus who died for you, seek him, open up your heart and mind, he knocks at the door of your life to offer you peace hope and love which has been the message of Christmas we have just celebrated.

Rev.d Georgie Hadley  
07811393920, 01636 821343, [georgie.hadley@yahoo.co.uk](mailto:georgie.hadley@yahoo.co.uk)



*Detail of The Light of the World by William Holman Hunt  
It is inspired by [Revelation 3:20](#): "Behold, I stand at the door and knock; if any man hear My voice, and open the door, I will come in to him, and will sup with him, and he with Me".*



- ◆ Messy Church is a form of church for children and adults that involves creativity, celebration and hospitality.
- ◆ It's primarily for people who don't already belong to another form of church.
- ◆ It typically includes a welcome, a long creative time to explore the biblical theme through getting messy; a short celebration time involving story, prayer, song, games and similar; and refreshments together at tables. All elements are for, and should include, people of all ages, adults and children.
- ◆ It's fun.
- ◆ It's a church for people at all stages of their faith journey and of any age - a congregation that is as valuable and worthy of investment as any of your other congregations.
- ◆ It models and promotes good ways of growing as a family: a nuclear family, an extended family, and a global and local church family.
- ◆ Its aim is to introduce Jesus, to give an opportunity to encounter him and to grow closer to him.

**Are you interested ?      Would you like to help ?**

**Contact Georgie 01636 821343 / 07811393920**



## Averham Church News

As many will know much had been planned for Averham Church to celebrate the special time of Christmas, but COVID had other plans for us. In view of the meteoric rise of Omicron infections it seemed sensible to cancel all the main events including the afternoon tea get together for January. We seem to be moving forwards a little bit in terms of COVID and it is hoped to have our regular afternoon tea event on February 23rd, 2pm in church. Even the days are looking brighter and definitely more light on all levels of our lives now!! Even the bulbs which were planted in the autumn along the path are putting in an effort and beginning to show. That is really something to look forward to. They should be a splendid show with the amount that were planted.

A word of thanks to everyone who has helped keep our church life alive during these difficult times; especially to our regular cleaners.

Below is the cleaning and flower rota for the next 12 months but I will send a reminder anyway. The cleaning and flowers list mainly covers the 4th Sunday of the month for the monthly service but some extras may occur and I will let you know.

January	Shaun McLaughlin and Alison Allen
February	Liz Stokes
March	Hilary Snell and Valerie Chester
April	Jenny Quickmire
May	Jenny Quickmire
June	Alison Allen
July	Jill McGhee and Pauline
August	Tracey and Graham Carlisle
September	Tracey and Graham Carlisle
October	Jean Burbage and Joan Hopkinson
November	Hazel Pennelegion
December	Team effort for Christmas Decorating etc.

*Jenny Quickmire*

## Please support Kelham and Averham Churches

### Averham Church

<https://givealittle.co/campaigns/ab066f56-6393-4d59-8c9f-813bd2ad1557>



### Kelham Church

<https://givealittle.co/campaigns/c418995a-257a-41b5-9d69-beb91cd43c9a>



### Five famous quotes from Desmond Tutu

*The recent death of Archbishop Desmond Tutu was mourned around the world. Here are five of his more famous quotes, which show why he was so especially honoured for his justice and reconciliation work in South Africa.*

“Do your little bit of good where you are; it's those little bits of good put together that overwhelm the world.”

“If you are neutral in situations of injustice, you have chosen the side of the oppressor. If an elephant has its foot on the tail of a mouse, and you say that you are neutral, the mouse will not appreciate your neutrality.”

“Don't raise your voice, improve your argument. Good sense does not always lie with the loudest shouters, nor can we say that a large, unruly crowd is always the best arbiter of what is right.”

“Forgiving is not forgetting; it's actually remembering - remembering and not using your right to hit back. It's a second chance for a new beginning. And the remembering part is particularly important. Especially if you don't want to repeat what happened.”

“Differences are not intended to separate, to alienate. We are different precisely in order to realise our need of one another.”

A beautiful venue for your exclusive event,  
from small and intimate up to 120 guests.

WEDDINGS  
CELEBRATIONS  
MEETINGS  
PRIVATE DINING  
MEMORIALS

— AT KELHAM HOUSE —



Kelham House  
Country Manor

kelhamhouse.co.uk • 01636 705266

Kelham | Newark | Nottinghamshire | NG23 5QP



Property Maintenance

RPA Joinery and Building Maintenance

Complete Property Maintenance including:

Tiling, decorating, plumbing, gardening, plastering, fencing,  
roofing, brickwork, garden and patio hard landscaping, electrics,  
soffits and fascias

Contact Rob: 07801 060589 / 01636 705668

Email: [roballen64@hotmail.com](mailto:roballen64@hotmail.com)

## SARAH KINGSLEY

FOOT HEALTH PRACTITIONER

SAC DIP (FOOT HEALTH PRACTICE)  
RHFP NO. S280333

£20 PER TREATMENT SESSION

HOME VISITS FOR NAIL  
CUTTING, TREATMENT OF  
CORNS, CALLUS, THICKENED  
& FUNGAL NAILS, CRACKED  
HEELS & VERRUCAE

TEL : 07443454177

## The Plough Community Printing Service

*I am able to offer a printing/copying  
service to residents of*

*Averham, Kelham and Staythorpe*

	Colour	B&W
A4 Single-sided	8p	5p
A4 double	15p	8p
A3 single-sided	15p	8p
A3 double	20p	12p

Email : [Editor.plough@hotmail.com](mailto:Editor.plough@hotmail.com)  
for more information



# Highfields

Independent School & Day Nursery  
LONDON ROAD, NEWARK, NOTTS NG24 3AL



## NOW ENROLLING FOR ENTRY IN 2022

### in Reception and across school

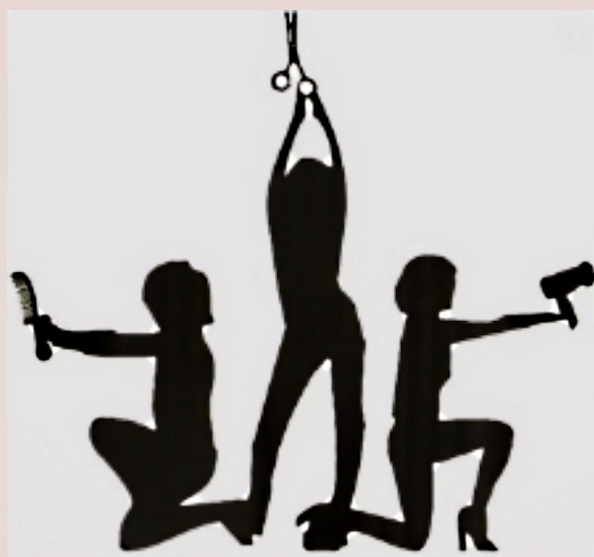
- ◆ Strong academic record ◆ Enhanced curriculum
- ◆ Small friendly classes ◆ Excellent pastoral care
- ◆ 14 acres of beautiful parkland ◆ Before and After School care
- ◆ Outstanding senior school preparation



For further information please contact: Cleo Staniforth 01636 704103

[admissions@highfieldschool.co.uk](mailto:admissions@highfieldschool.co.uk)

[www.highfieldschool.co.uk](http://www.highfieldschool.co.uk)



Milkshake & Revlon professional accredited  
Salon

---

# Hair Design by Pina

## Love is in the hair

---

*Main Street  
North Muskham  
NG23 6ER*

**TELEPHONE**  
**01636 679800**

*hairdesignbypina.co.uk*



## *'Our family caring for your family'*

The Gill family are proud to have provided care and advice to families in the Newark and District Area for over 100 years

For those who wish to provide for their funeral expenses, we offer the E. Gill & Sons Funeral Pre-payment Plan

- A Local Funeral Plan
- A Local Price
- A Local Independent Funeral Director
- Funds held in a guaranteed whole of life insurance policy

55 Albert Street,  
Newark, NG24 4BQ  
Telephone: 01636 677461

## We Care Auto Repair

The garage that comes to you.  
Fully qualified with 21 years' experience  
Dealer trained



Servicing



Brakes



Clutches



Warning Light  
Diagnostics



Suspension



Free Estimates



Timing Belts



Fully Insured

Paul Cassidy 07926 250 269  
[wecareautorepairs@outlook.com](mailto:wecareautorepairs@outlook.com)



## Plumbing & Heating

- Boiler replacements & system upgrades
- Boiler service & repair
- Unvented & vented hot water installations
- Bathroom design & installation
- All general plumbing & heating work.

For a free quote contact:

07539 270467

07532 283484

[info@eliteheatltd.com](mailto:info@eliteheatltd.com)

## USEFUL CONTACTS

**CORONAVIRUS UPDATES:** please see the District Council website:

<https://www.newark-sherwooddc.gov.uk/>

\* \* \* \* \*

### The Churches

Rev'd Georgie Hadley, [georgie.hadley@yahoo.co.uk](mailto:georgie.hadley@yahoo.co.uk); 07811 393 920

Kelham: Church Warden, 01636 703289 (Philip Staniforth)

Treasurer: 07889 486260 (Steve Emeny)

Averham: Church Warden, 01636 919146 (Shaun McLaughlin)

Treasurer: 01636 672640 (Hilary Snell)

Parochial Church Council Secretary: 01636 816343 (Carole Binks)

\* \* \* \* \*

**AKS Parish Council:** website <http://www.akspc.org.uk/community/averham-kelham-and-staythorpe-parish-council-15064/home/>

Chairman: Andy Fereday, 0775 2265081; [cllrfereday@gmail.com](mailto:cllrfereday@gmail.com)

Clerk: Sue Jackson; [aksparishclerk@outlook.com](mailto:aksparishclerk@outlook.com)

\* \* \* \* \*

**Gardening Club:** Nigel Britton; 01636 700023 or 01636 812886

**Walker's Group:** Debs and Carla; 07974 957 684 or [debs@hens-at-home.co.uk](mailto:debs@hens-at-home.co.uk)

**Bell Ringers:** Martin Cooper; 07810 658 627 or [mlcooper2@gmail.com](mailto:mlcooper2@gmail.com)

**Women's Institute:** Angela Moore (President) [angela@oranalysts.com](mailto:angela@oranalysts.com)

or Jenny Quickmire (Meetings Secretary) [headbearsenior@gmail.com](mailto:headbearsenior@gmail.com)

\* \* \* \* \*

**PCSO contact details:** Richard Dunn: 07595 074292

**Staythorpe Power Station:** [Staythorpe@rwe.com](mailto:Staythorpe@rwe.com); 01636 596900

**Lathams' Farms:** Steven Gill 07966 382781; Stuart Perkins 07818 171689

**To report Potholes:** 0300 500 80 80 / [www.nottinghamshire.gov.uk/transport/roads/potholes/report-a-pothole](http://www.nottinghamshire.gov.uk/transport/roads/potholes/report-a-pothole)

**CODE FOR THE DEFIBRILLATOR BOXES: C0159X**

*If you think I've missed a useful contact, please get in touch:*

[editor.plough@hotmail.com](mailto:editor.plough@hotmail.com)